

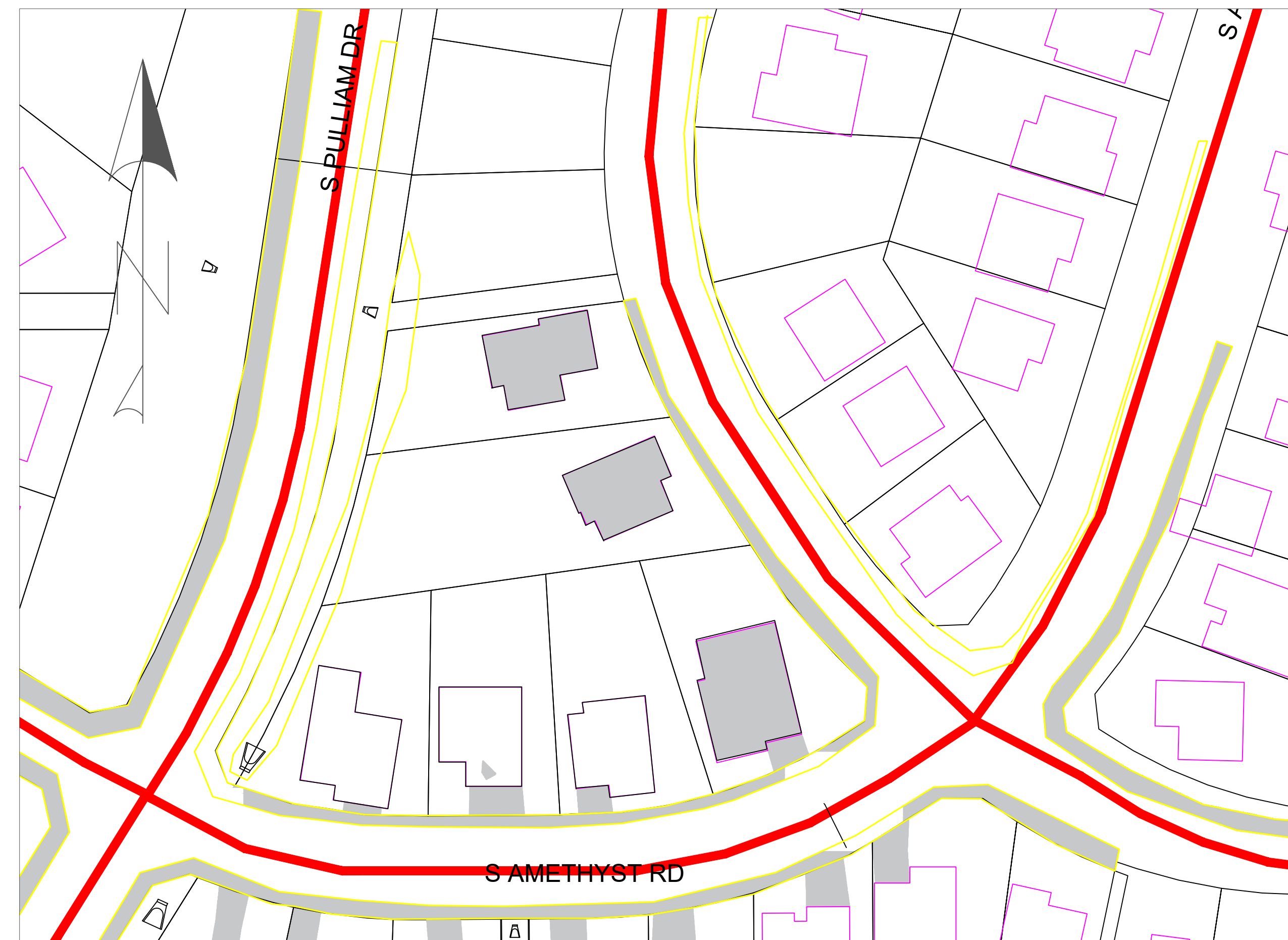


# Summit Residential Neighbourhood Earthen Channel/Culvert re-assessment.



## Project Location:

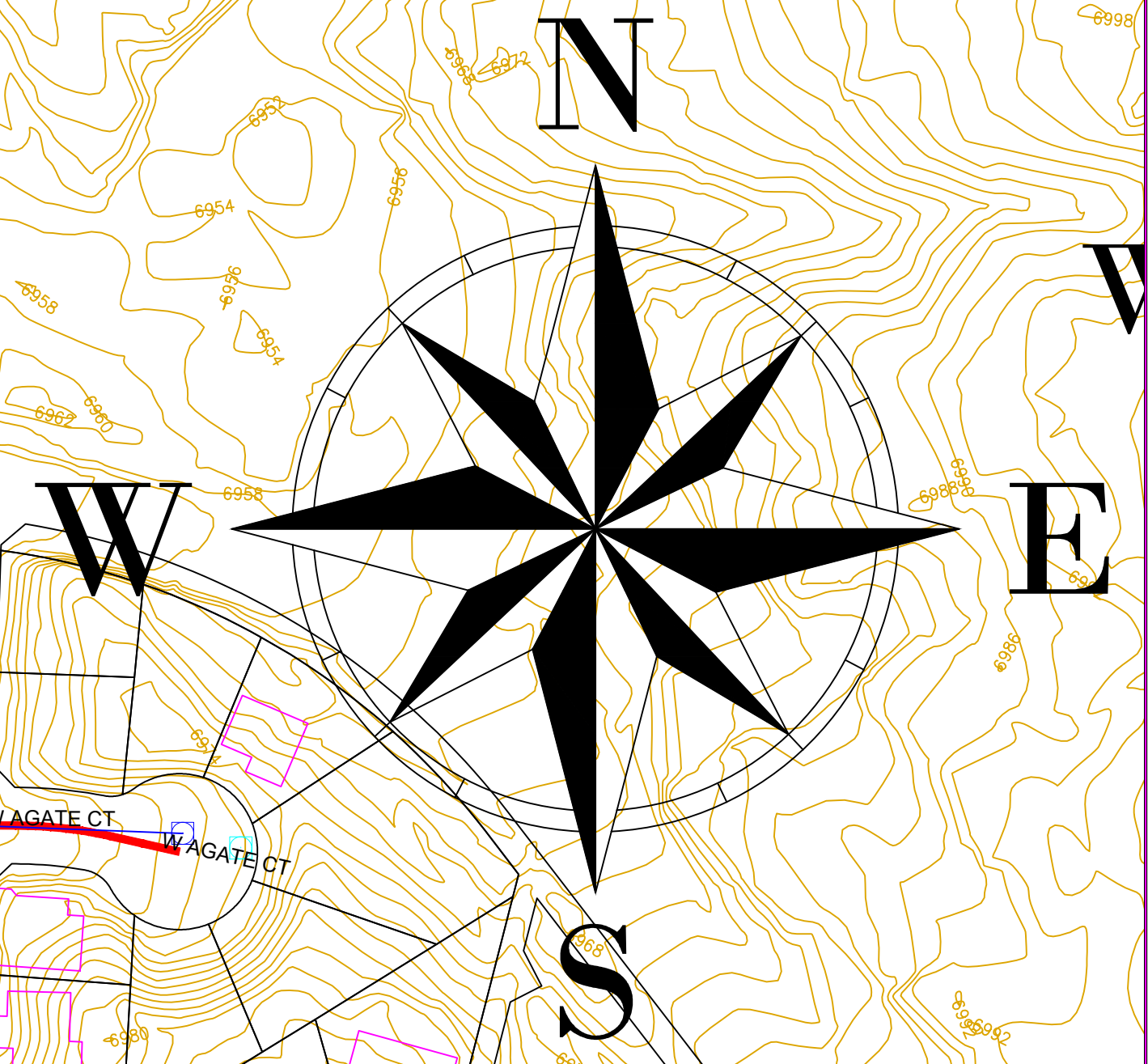
Project is located along South Pullam Dr, Flagstaff Arizona 86005.



Project site map

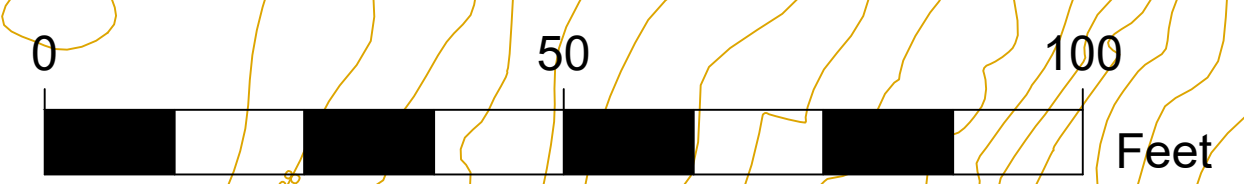
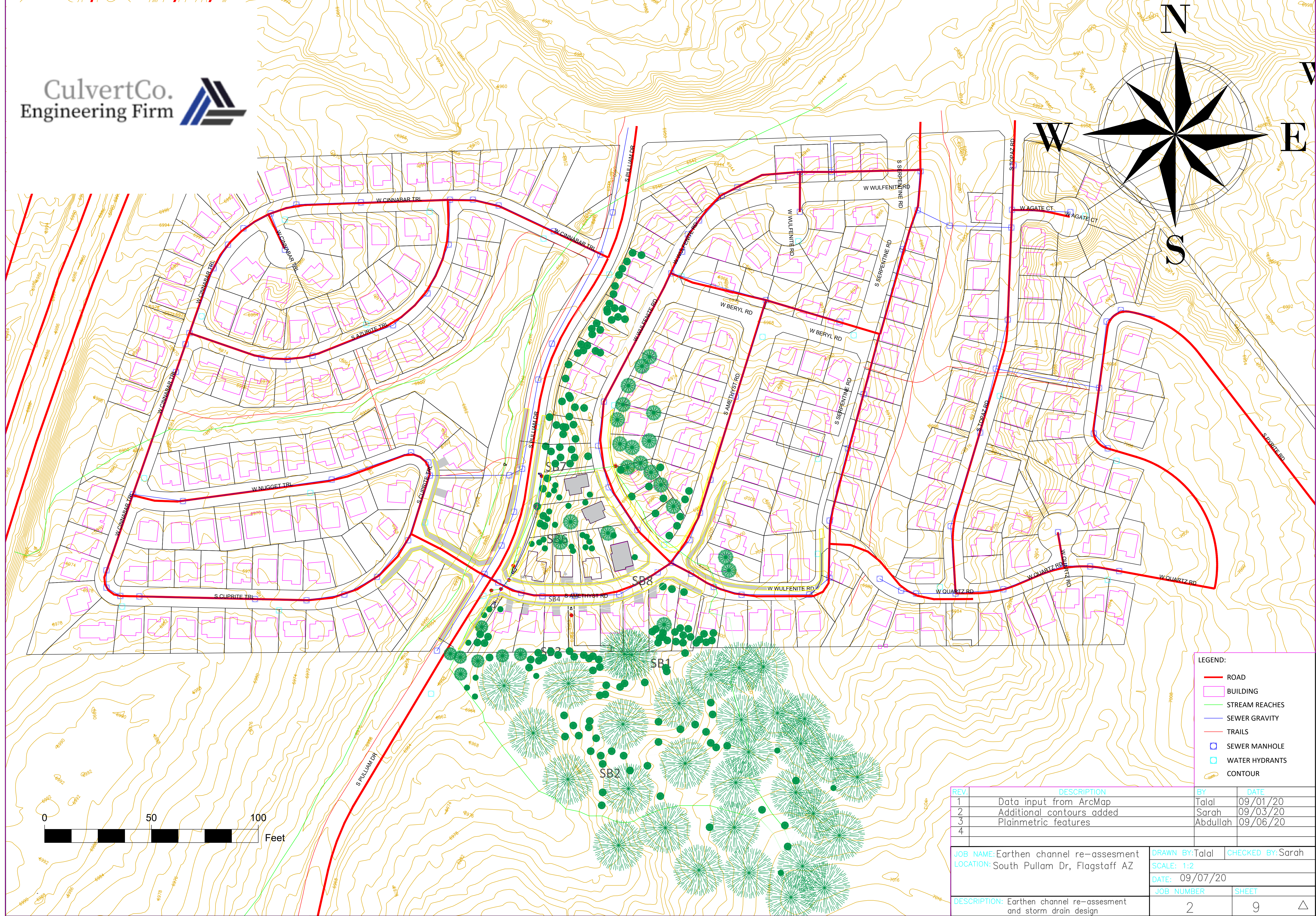
## List of sheets:

- 1- Cover Sheet
- 2- Topographic Map
- 3- Project Site
- 4- Channel and River Stations
- 5- Culverts
- 6- Plan View 18" HDPE pipe
- 7- Plan View 18" Concrete Pipe
- 8- Plan View 72" CMP
- 9- Cross section 18" HDPE pipe



PRODUCED BY AN AUTODESK STUDENT VERSION

PRODUCED BY AN AUTODESK STUDENT VERSION

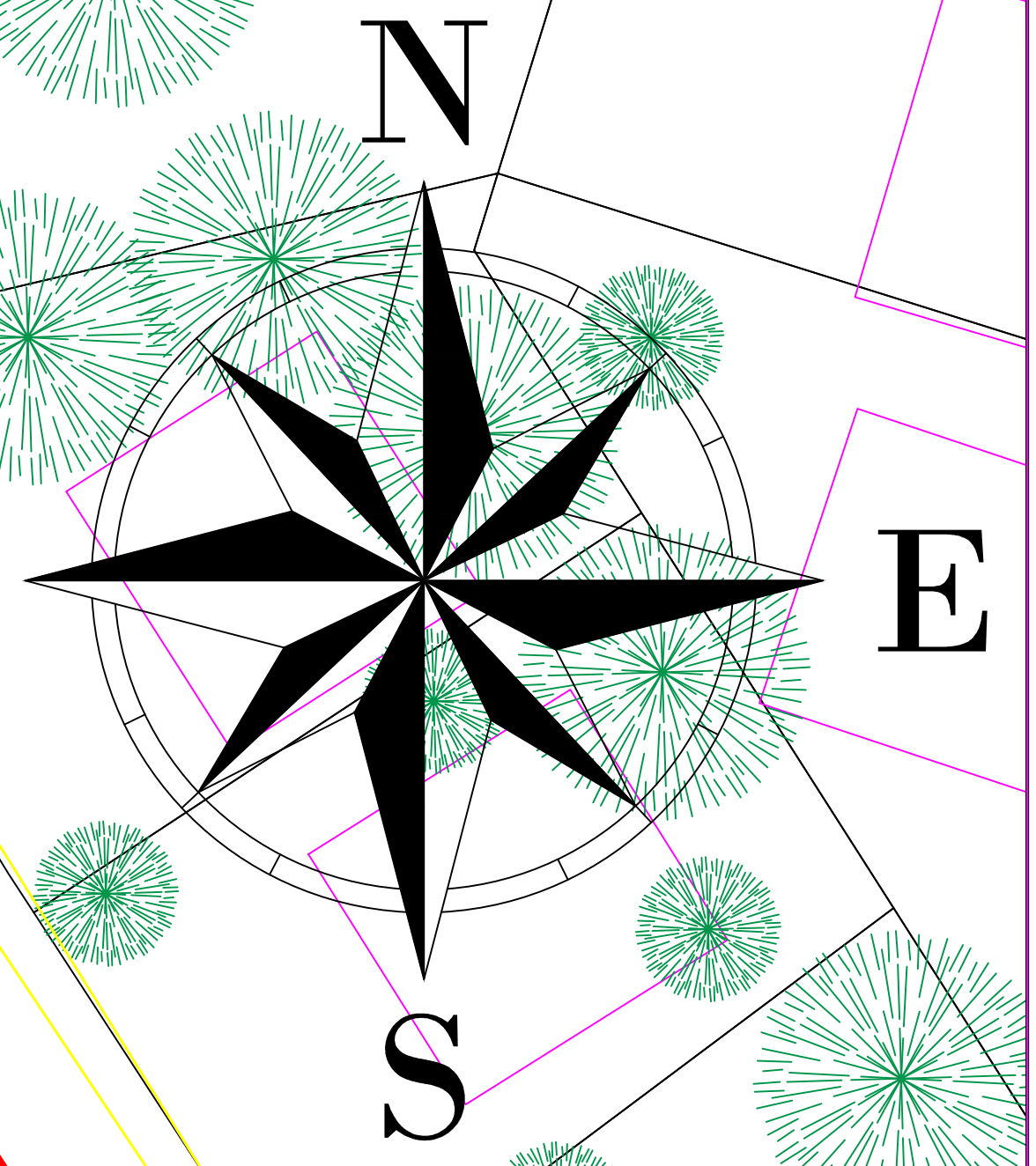


- LEGEND:**
- ROAD
  - BUILDING
  - STREAM REACHES
  - SEWER GRAVITY
  - TRAILS
  - SEWER MANHOLE
  - WATER HYDRANTS
  - CONTOUR

REV.	DESCRIPTION	BY	DATE
1	Data input from ArcMap	Talal	09/01/20
2	Additional contours added	Sarah	09/03/20
3	Plainmetric features	Abdullah	09/06/20
4			

JOB NAME: Earthen channel re-assesment		DRAWN BY: Talal		CHECKED BY: Sarah	
LOCATION: South Pullam Dr, Flagstaff AZ		SCALE: 1:2		DATE: 09/07/20	
DESCRIPTION: Earthen channel re-assesment and storm drain design		JOB NUMBER: 2		SHEET: 9	



Culvert 2 outlet

Culvert 2 inlet

SB7

Underground Culvert

18+02.08  
River Station 115

Open Channel

SB6

00+66.97  
River Station 95

Thalweg

Culvert 1 outlet

0+00.00

SB5

Underground Culvert

SB8

SB4 S AMETHYST RD

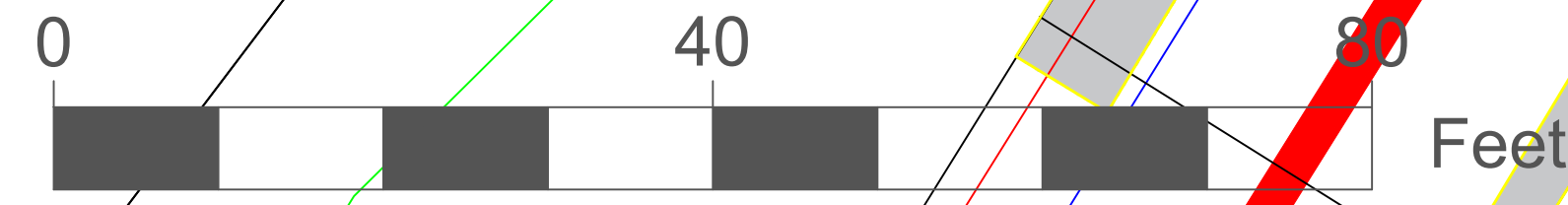
Culvert 1 inlet

SB3

- LEGEND:
- ROAD
  - BUILDING
  - STREAM REACHES
  - SEWER GRAVITY
  - TRAILS
  - SEWER MANHOLE
  - WATER HYDRANTS
  - CONTOUR

REV.	DESCRIPTION	BY	DATE
1	Data input from ArcMap	Talal	09/01/20
2	Additional contours added	Sarah	09/03/20
3	Plainmetric features	Abdullah	09/06/20
4			

JOB NAME: Earthen channel re-assesment		DRAWN BY: Talal		CHECKED BY: Sarah	
LOCATION: South Pullam Dr, Flagstaff AZ		SCALE: 1:2		DATE: 09/07/20	
DESCRIPTION: Earthen channel re-assesment and storm drain design		JOB NUMBER: 3		SHEET: 9	



PRODUCED BY AN AUTODESK STUDENT VERSION

PRODUCED BY AN AUTODESK STUDENT VERSION



2 outlet

Culvert 2 inlet

SB7

Underground Culvert



18+02.08  
River Station 115

Open Channel

SB6

00+66.97  
River Station 95

Thalweg

Culvert 1 outlet

0+00.00

SB5

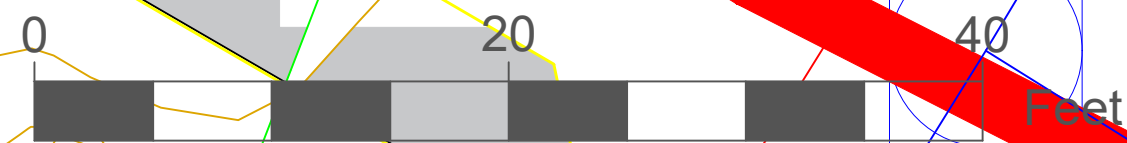
LEGEND:

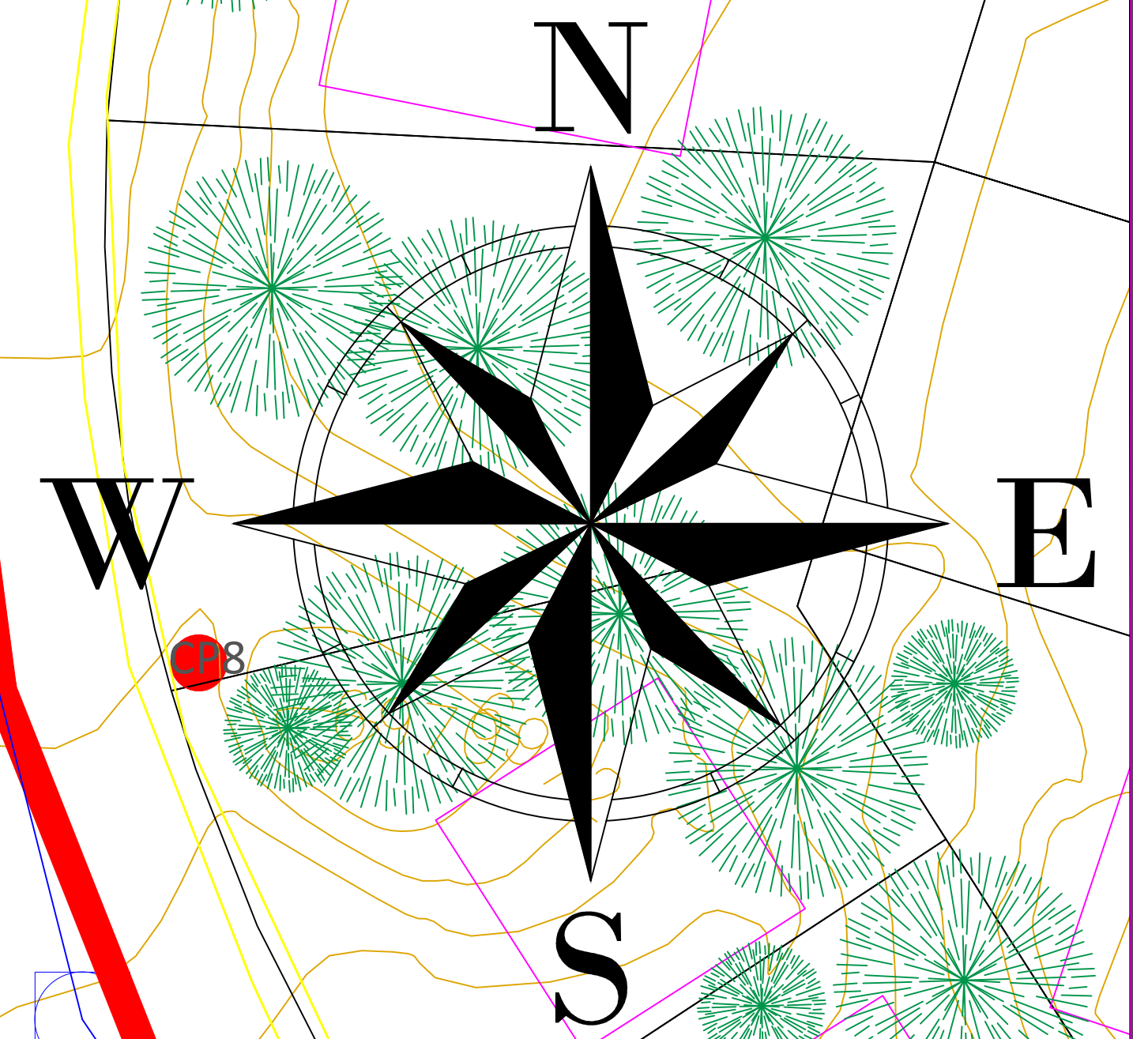
- ROAD
- BUILDING
- STREAM REACHES
- SEWER GRAVITY
- TRAILS
- SEWER MANHOLE
- WATER HYDRANTS
- CONTOUR

REV.	DESCRIPTION	BY	DATE
1	Data input from ArcMap	Talal	09/01/20
2	Additional contours added	Sarah	09/03/20
3	Plainmetric features	Abdullah	09/06/20
4			

JOB NAME: Earthen channel re-assesment	DRAWN BY: Talal	CHECKED BY: Sarah
LOCATION: South Pullam Dr, Flagstaff AZ	SCALE: 1:2	
	DATE: 09/07/20	
	JOB NUMBER	SHEET

DESCRIPTION: Earthen channel re-assesment and storm drain design	4	9	△
--	---	---	---





Culvert 2 outlet

Culvert 2 inlet

SB7

Underground Culvert

SCUPRITE TRL

18+02.08  
River Station 115

Open Channel

SB6

00+66.97  
River Station 95

Thalweg

Culvert 1 outlet

0+00.00

SB5

Underground Culvert

S AMETHYST RD

SB4

Culvert 1 inlet

- LEGEND:
- ROAD
  - BUILDING
  - STREAM REACHES
  - SEWER GRAVITY
  - TRAILS
  - SEWER MANHOLE
  - WATER HYDRANTS
  - CONTOUR

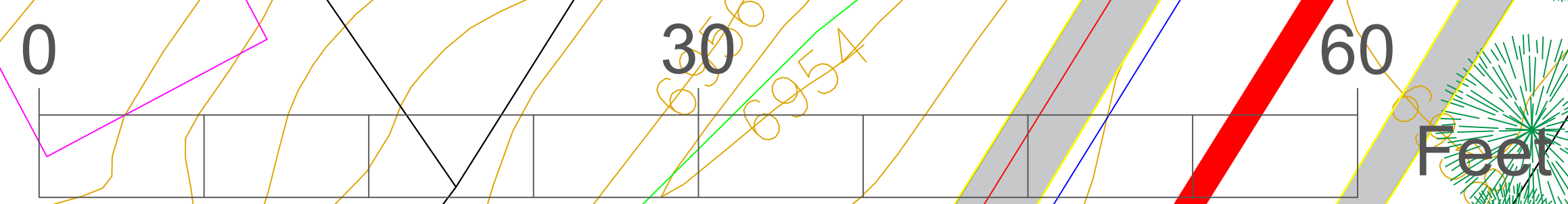
REV.	DESCRIPTION	BY	DATE
1	Data input from ArcMap	Talal	09/01/20
2	Additional contours added	Sarah	09/03/20
3	Plainmetric features	Abdullah	09/06/20
4			

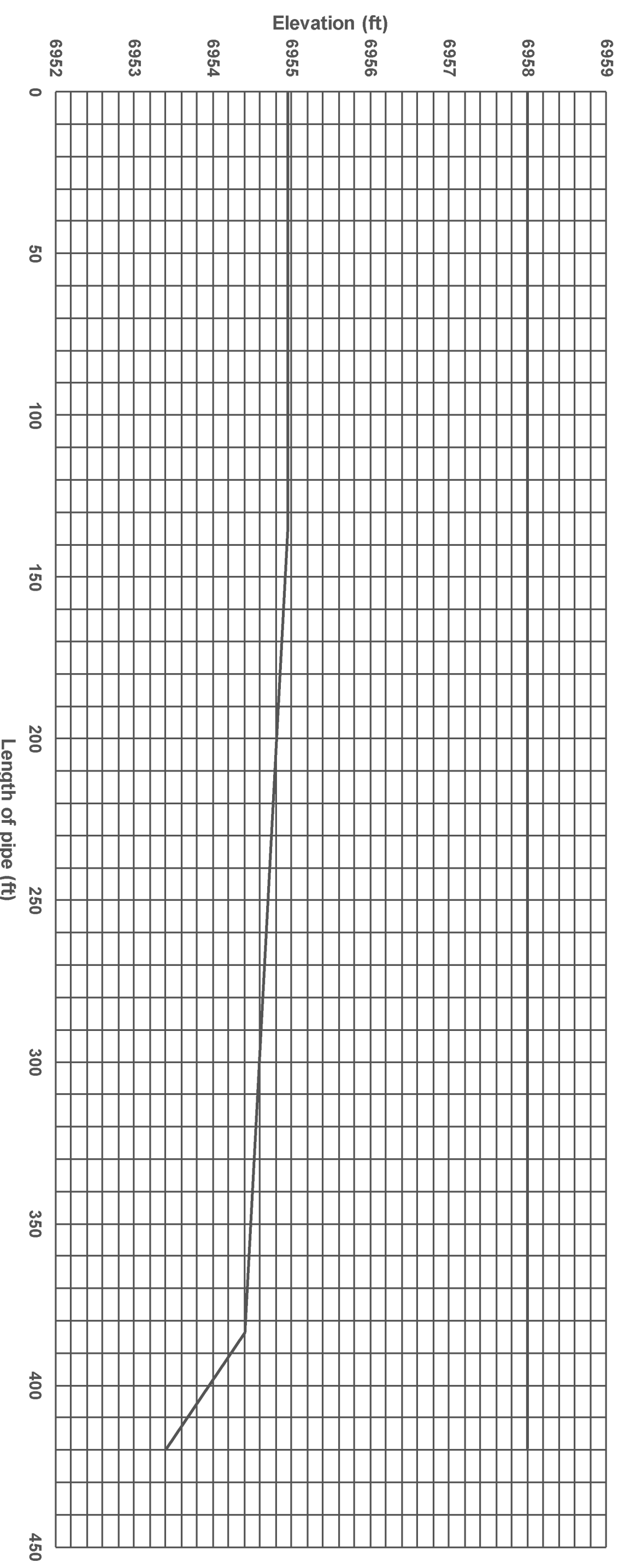
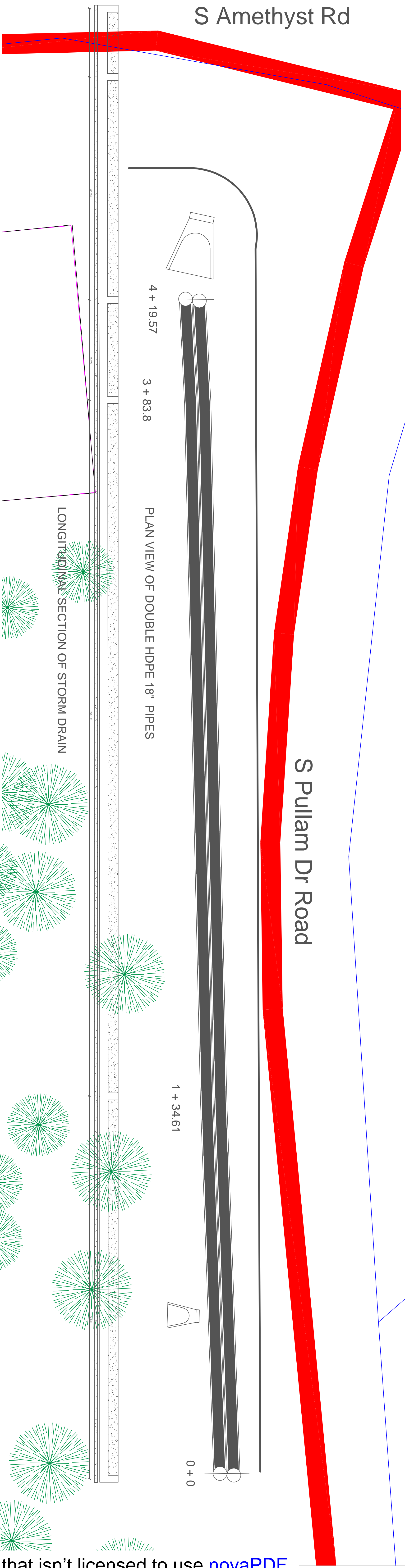
JOB NAME: Earthen channel re-assesment  
 LOCATION: South Pullam Dr, Flagstaff AZ

DRAWN BY: Talal  
 CHECKED BY: Sarah

SCALE: 1:2  
 DATE: 09/07/20

DESCRIPTION	JOB NUMBER	SHEET
Earthen channel re-assesment and storm drain design	5	9





Profile of pipe

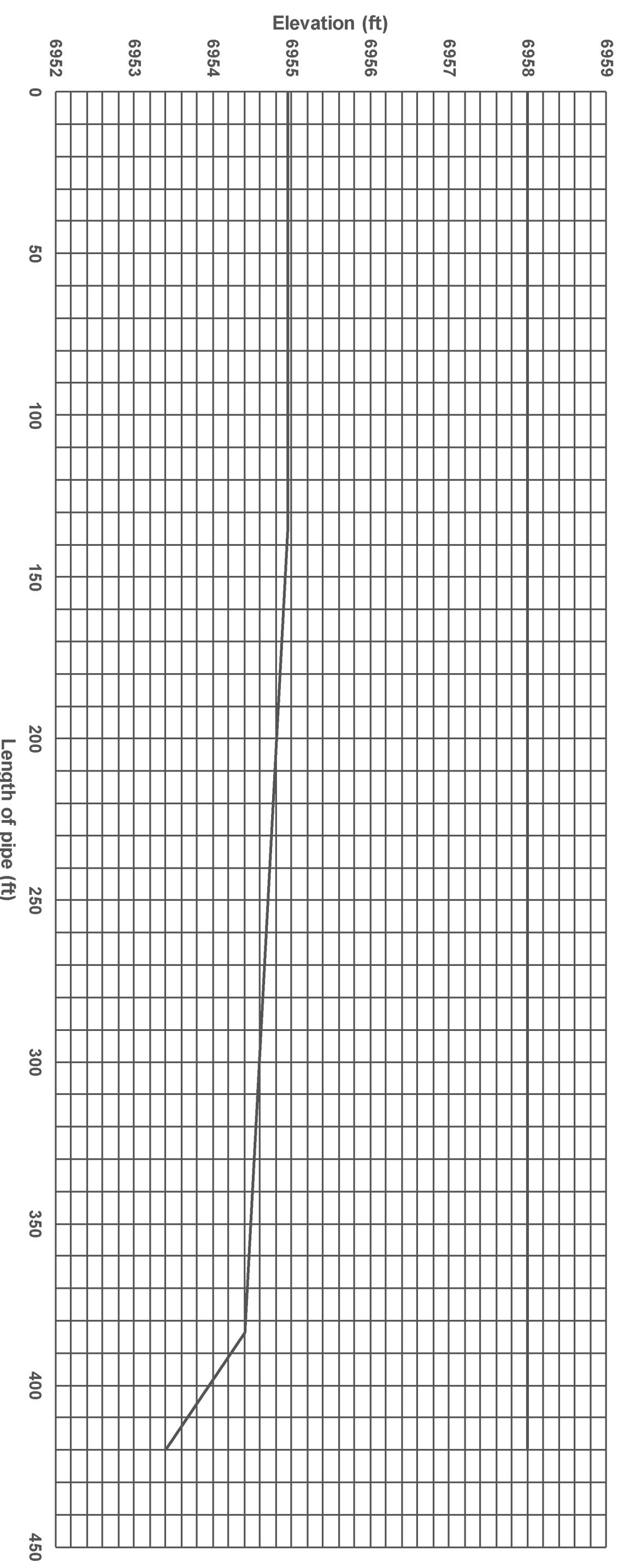
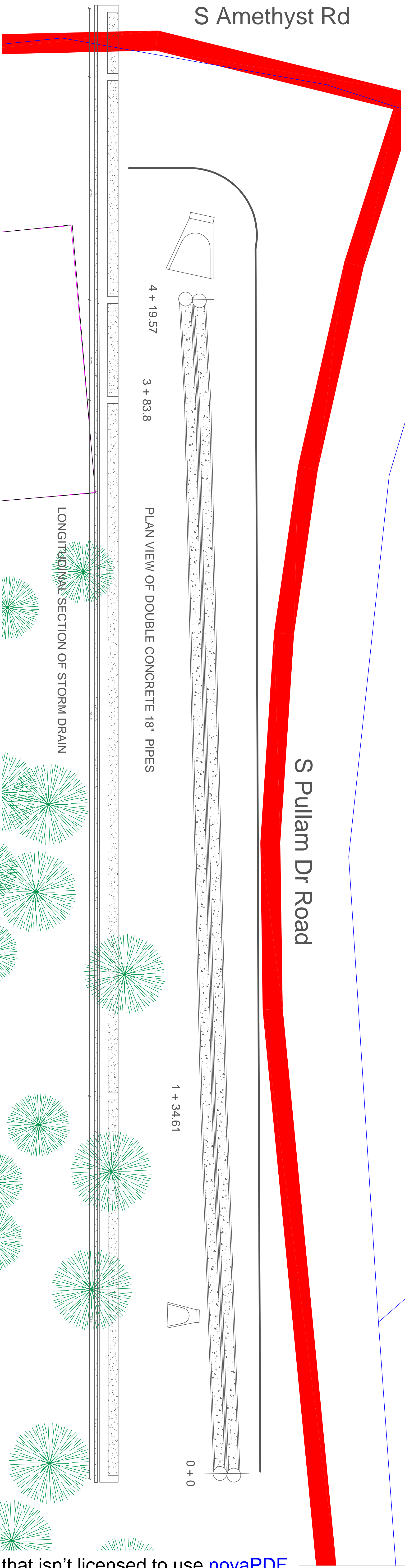
LONGITUDINAL SECTION OF STORM DRAIN

PLAN VIEW OF DOUBLE HDPE 18" PIPES

REV.	DESCRIPTION	BY	DATE
1	Initial material and diameter selection	Talal	10/21/20
2	material and diameter changes	Talal	10/30/20

JOB NAME: plan view of 18" HDPE		DRAWN BY: Talal	CHECKED BY: Sarah
LOCATION: South Pullam Dr, Flagstaff AZ		SCALE: 1":100'	
DATE: 11/05/20		JOB NUMBER	SHEET
DESCRIPTION: SELECTED FINAL DESIGN STORM DRAIN		1	6/9



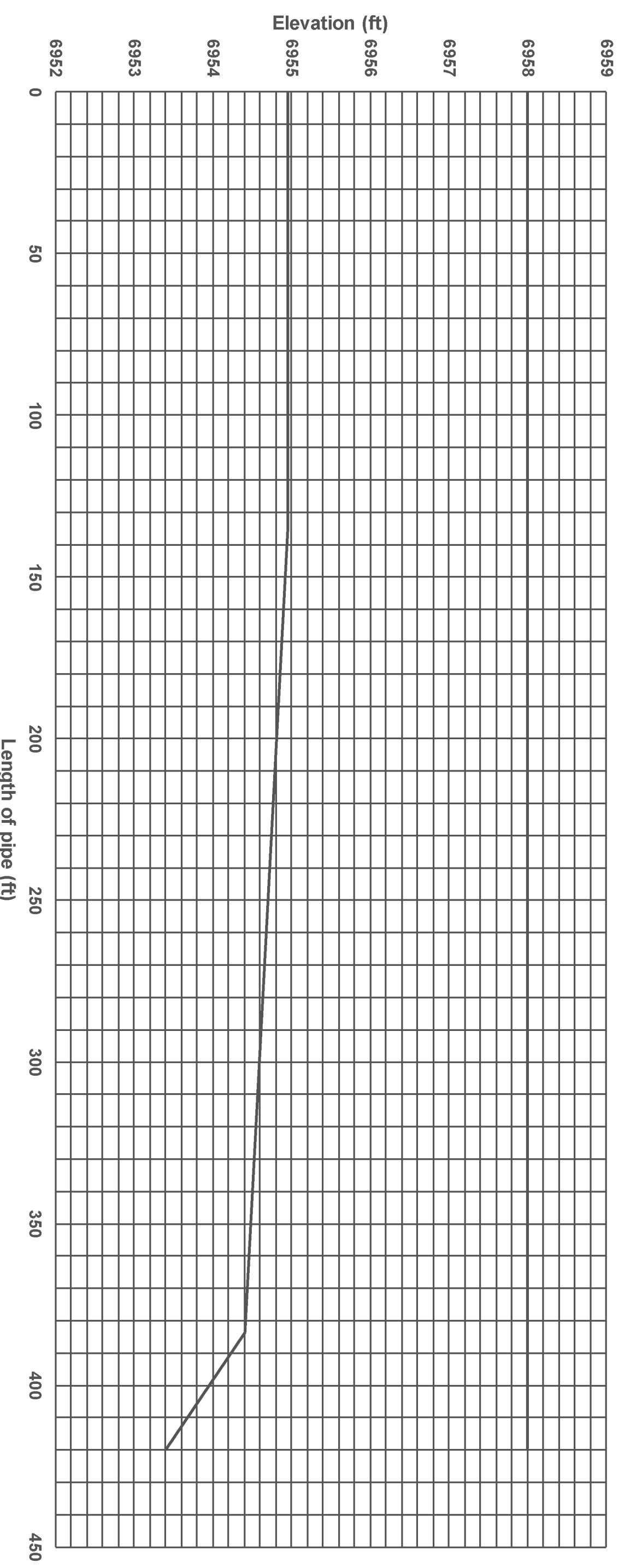
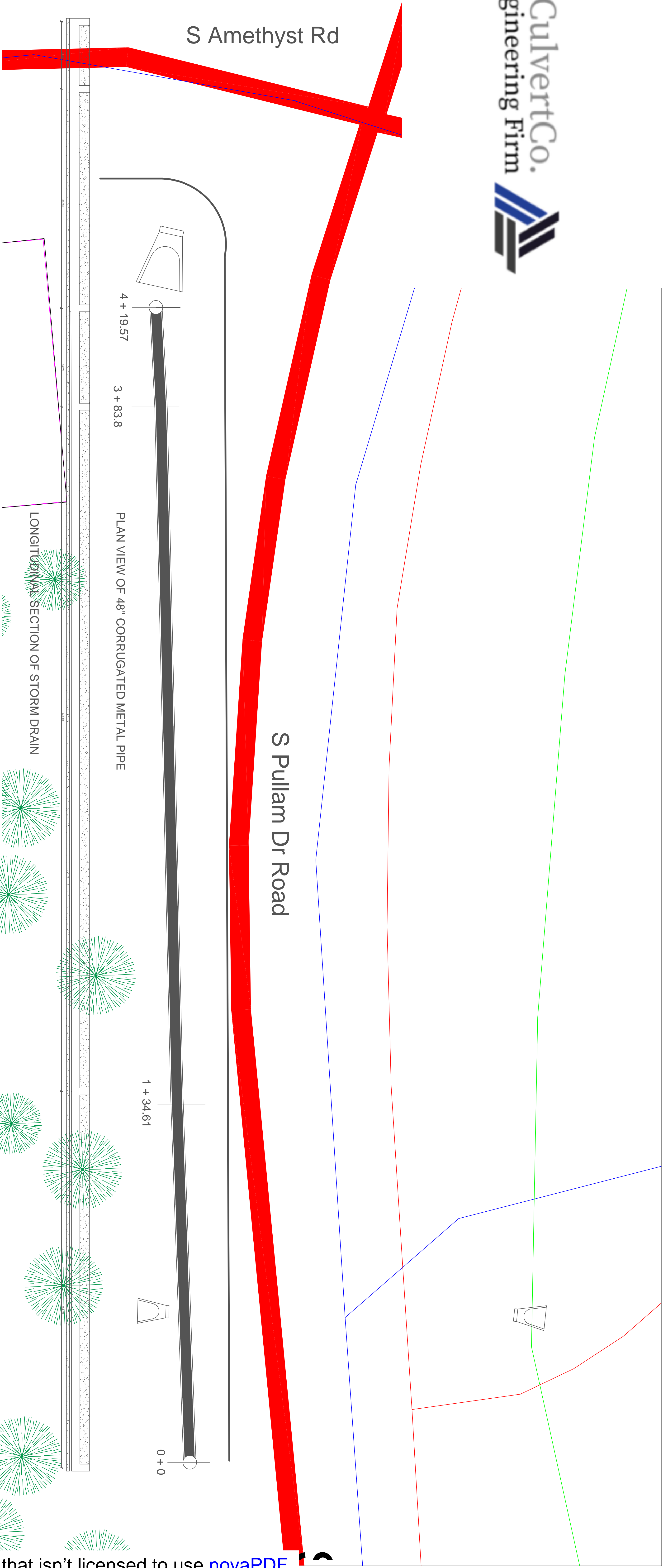
LONGITUDINAL SECTION OF STORM DRAIN

Profile of pipe

REV.	DESCRIPTION	BY	DATE
1	Initial material and diameter selection	Talal	10/21/20
2	material and diameter changes	Talal	10/30/20

JOB NAME: plan view of CONCRETE 18"		DRAWN BY: Talal	CHECKED BY: Sarah
LOCATION: South Pullam Dr, Flagstaff AZ		SCALE: 1":100'	
DATE: 11/05/20		JOB NUMBER	SHEET
DESCRIPTION: STORM DRAIN ALTERNATIVE		1	7/9

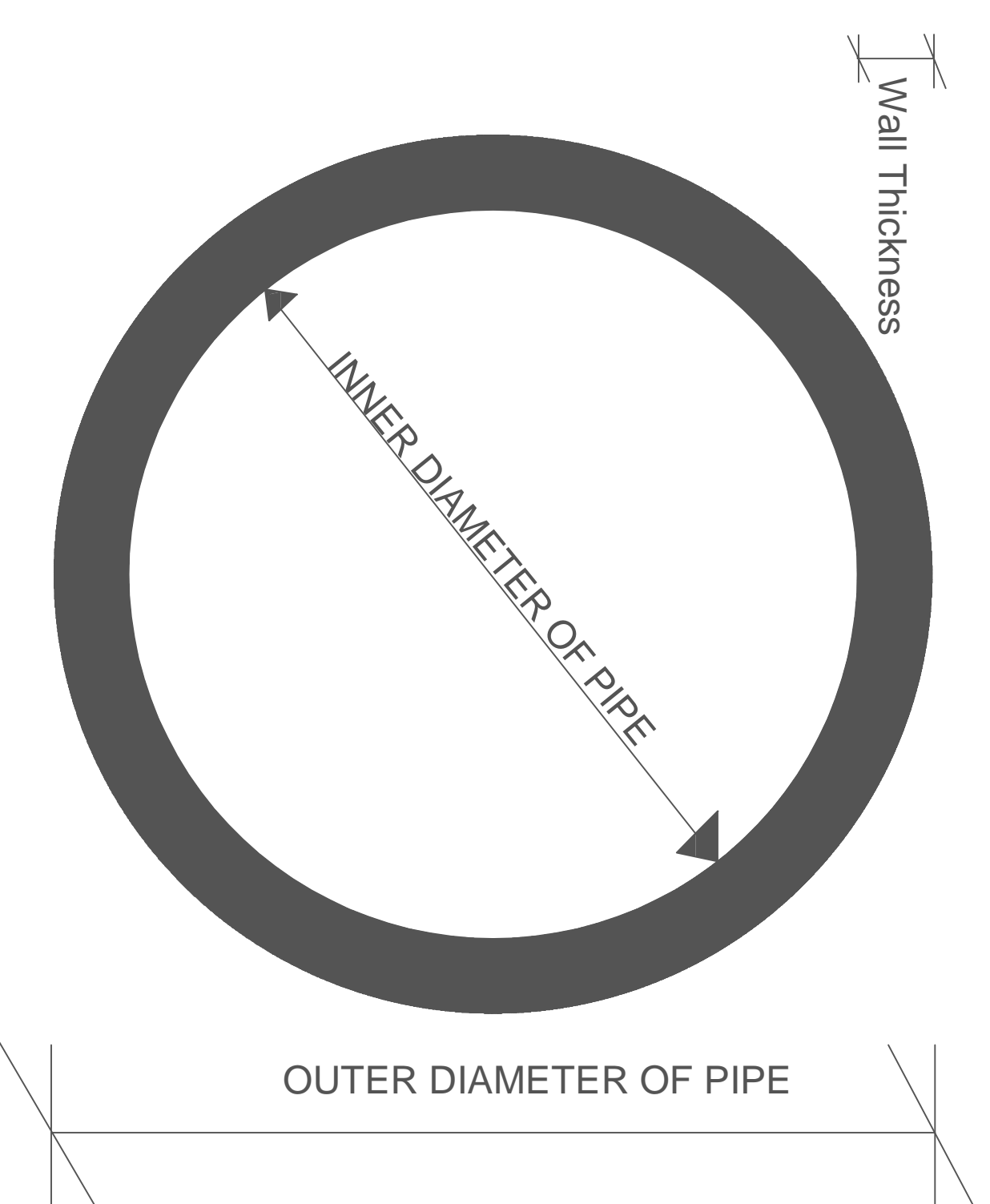
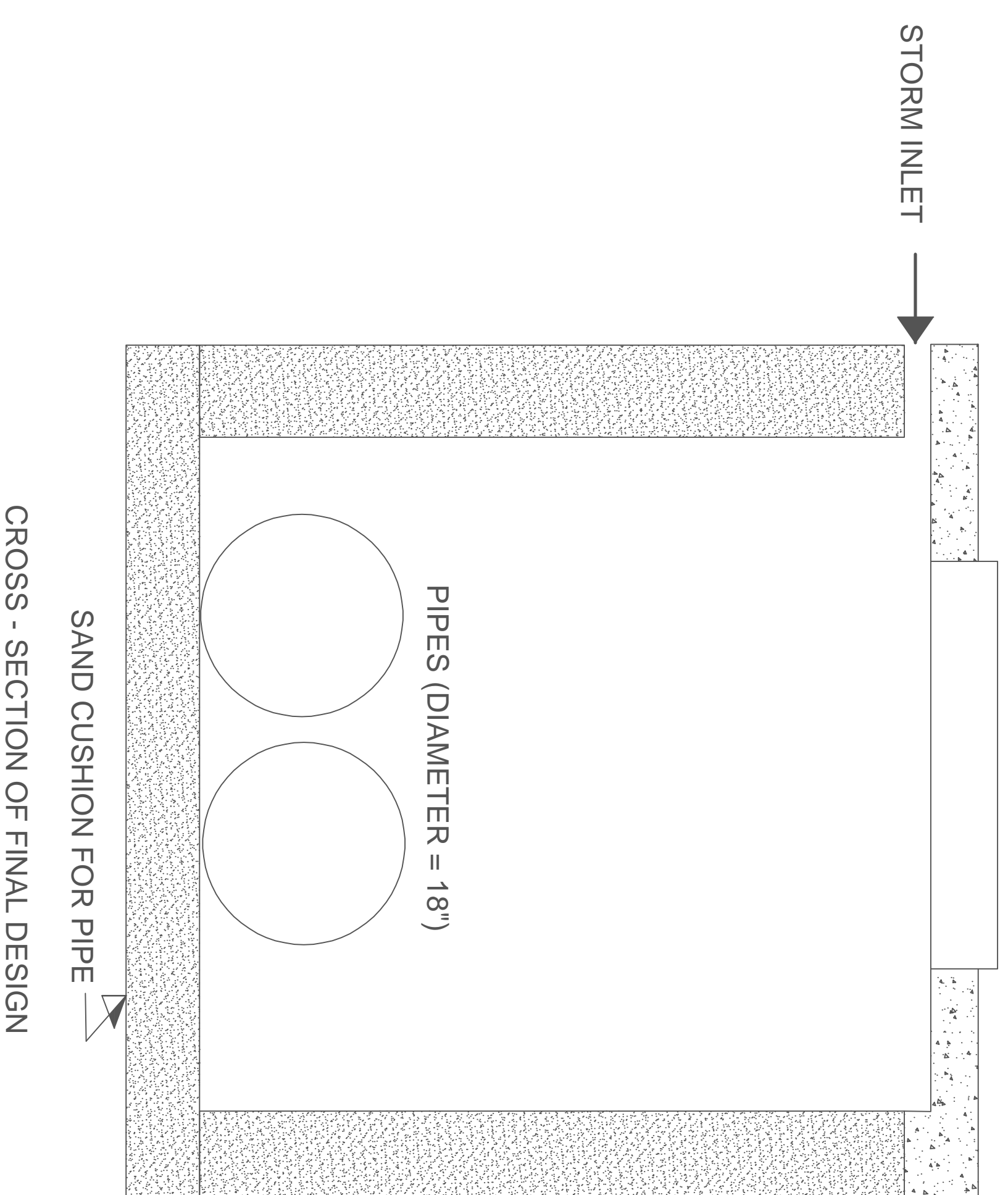


REV.	DESCRIPTION	BY	DATE
1	Initial material and diameter selection	Talal	10/21/20
2	material and diameter changes	Talal	10/30/20

JOB NAME: plan view of CMP 48"		DRAWN BY: Talal	CHECKED BY: Sarah
LOCATION: South Pullam Dr, Flagstaff AZ		SCALE: 1" = 100'	
DATE: 11/05/20		JOB NUMBER	SHEET
DESCRIPTION: STORM DRAIN ALTERNATIVE		1	8/9





REV.	DESCRIPTION	BY	DATE
1	Initial material and diameter selection	Talal	10/21/20
2	material and diameter changes	Talal	10/30/20
3	inspection chamber removed	Talal	11/20/20

JOB NAME: Cross section of final design  
LOCATION: South Pullam Dr, Flagstaff AZ

DRAWN BY: Talal	CHECKED BY: Sarah
SCALE: 1":100'	
DATE: 11/05/20	
JOB NUMBER	SHEET
1	9/9

DESCRIPTION:  
CROSS SECTION OF HDPE PIPE